

# EPN<sup>®</sup>

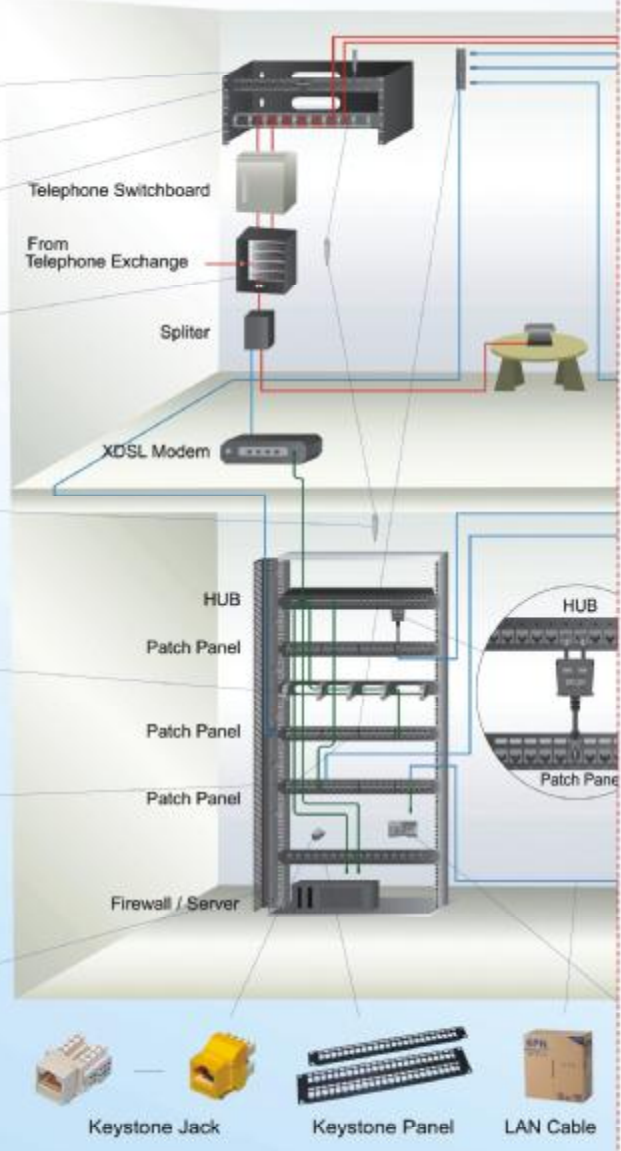
## STRUCTURED CABLING SYSTEMS





EPNEW ELECTRONICS CO.,LTD.

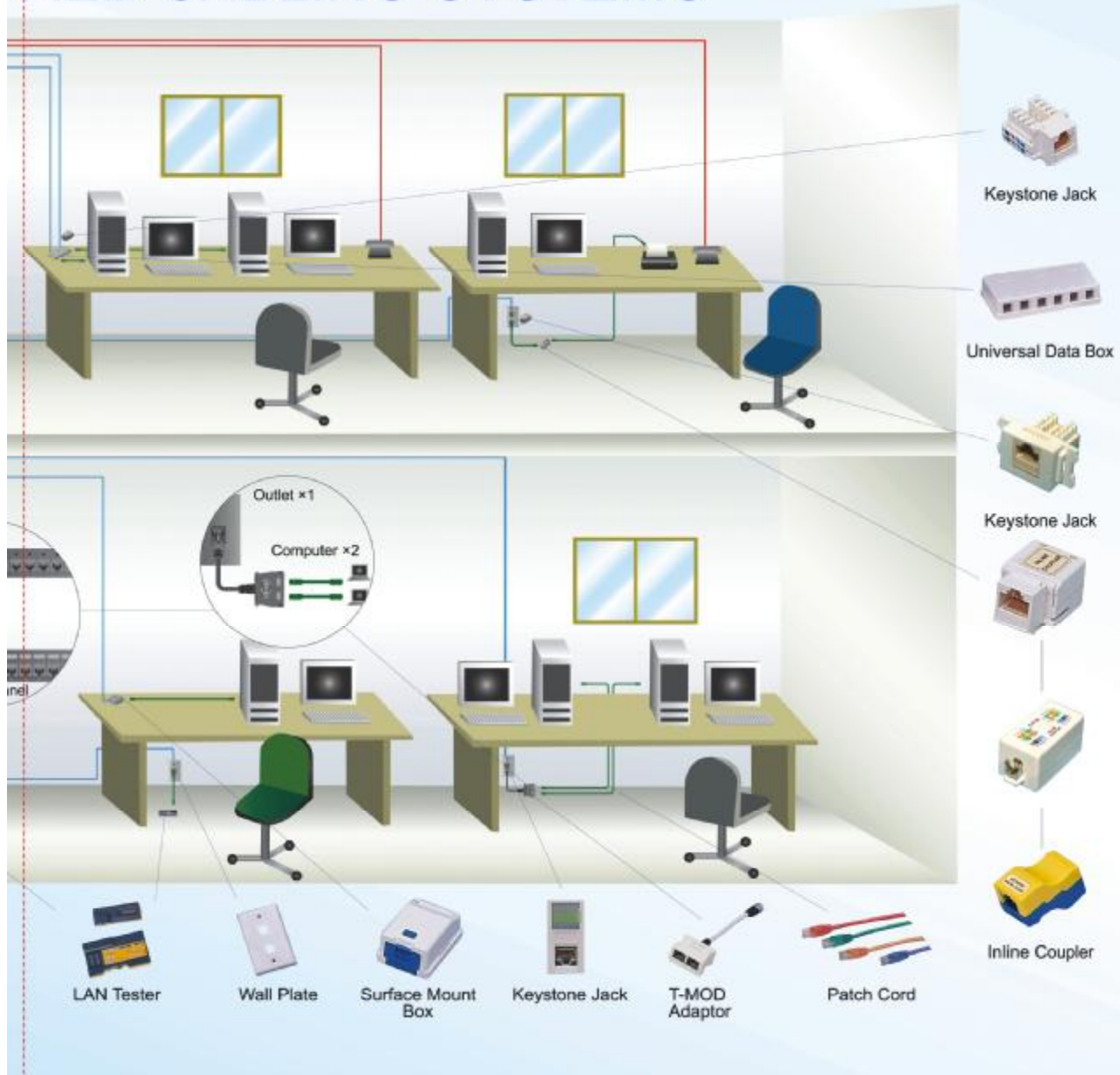
# LAN STRUCTURE



EPNEW ELECTRONICS CO., LTD.  
TAIWAN

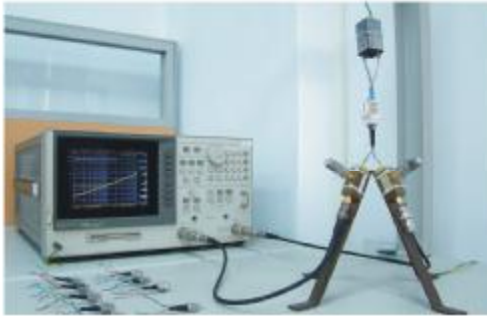
**EPNEW Electronics Co., Ltd.** was established in 1997 as a manufacturer and exporter of structured cabling solution. We take pride in our excellent reputation among professionals who demand uncompromising performance, technical excellence and reliability. We have distributed facilities in United States, Canada, South American, Asia, Australia, The Middle East and Europe. We use the newest and finest equipment at our manufacturing facilities, so we can assure you of the highest quality every step of the way.

# WIRED CABLING SYSTEMS



- ◆ Our knowledgeable sales representatives are available to provide assistance and advice.
- ◆ With several decades of telecommunications industry experience, our unbeatable R&D team has the expertise of provide outstanding technical support and meet special customer needs such as those associated with OEM and ODM services.
- ◆ We take care to maintain our reputation for competitive pricing and on-time delivery.
- ◆ Supply the Cat.5e and Cat.6 solution and continuously re-invests in research & development, new equipment, and new capabilities.

**EQUIPMENT**



**HP-8753D Network Analyzer**



**FLUKE DTX-1800**



**Micro-Overhead Projector**



**PAD Printer**




















**Injection Machine**

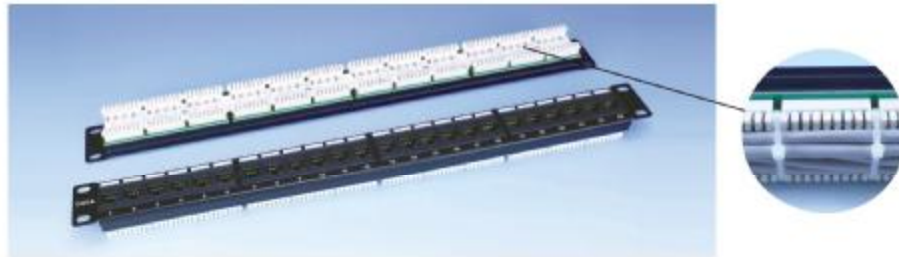


**Press Machine**

## INDEX

	PCB Module Patch Panel .....	1-4
	Feed Through Patch Panel .....	5-10
	89 Series Mini Patch Panel .....	11-14
	Unloaded Patch Panel .....	15-18
	Cable Manager & Rack .....	19-20
	Keystone Jack & Inline Coupler .....	21-25
	Surface Mount Box .....	26-27
	Faceplate & Back Box .....	28-33
	Wall Outlet .....	34-37
	T-Mod Adapter & LAN Tester .....	38-40
	LAN Cable & Patch Cord .....	41
	Plug , Boot & Cable Tie .....	42-44
	110 Wiring Block .....	45
	Telecom Accessories .....	46-47
	Tools .....	48-49
	Certificate .....	50-53
	Packing Reference .....	54

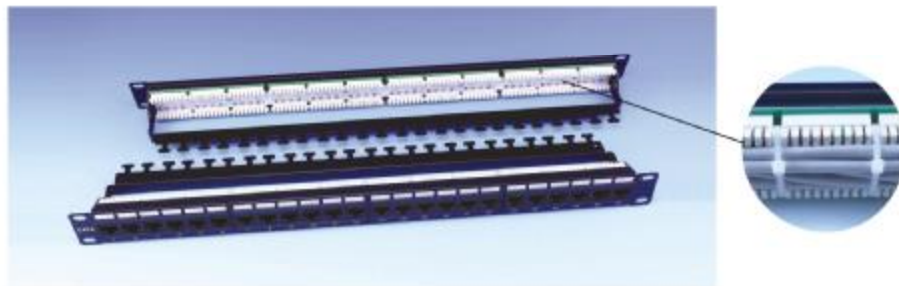
## 19" PCB Module Patch Panel



**X PLX - XX X X**

CAT. X	IDC	PORT	IDC CAP	PANEL COLOR
E : C5e 6 : C6	H : Dual M : 110	12 : 12 Ports 16 : 16 Ports 24 : 24 Ports 32 : 32 Ports 48 : 48 Ports	0 : w / o 1 : w / h	BK : Black I V : Ivory

EX : EPLH-240BK : Cat.5e Patch Panel Dual IDC block 24 ports w/o cap black



**X PLX - XX X X RM**

CAT. X	IDC	PORT	IDC CAP	PANEL COLOR
E : C5e 6 : C6	H : Dual M : 110	12 : 12 Ports 16 : 16 Ports 24 : 24 Ports 32 : 32 Ports 48 : 48 Ports	0 : w / o 1 : w / h	BK : Black I V : Ivory

## 19" PCB Module Patch Panel



**X PLA - 24 X X** (Patented)

CAT. X	IDC CAP	PANEL COLOR
E : C5e 6 : C6	0 : w / o 1 : w / h	BK : Black I V : Ivory



**X PLA - 24 X X FM** (Patented)

CAT. X	IDC CAP	PANEL COLOR
E : C5e 6 : C6	0 : w / o 1 : w / h	BK : Black I V : Ivory



**X PLA - 24 X X RM** (Patented)

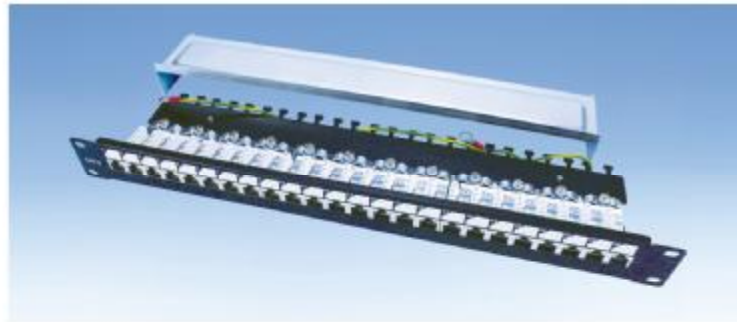
CAT. X	IDC CAP	PANEL COLOR
E : C5e 6 : C6	0 : w / o 1 : w / h	BK : Black I V : Ivory



**X PLA - 24 X X FMRM** (Patented)

CAT. X	IDC CAP	PANEL COLOR
E : C5e 6 : C6	0 : w / o 1 : w / h	BK : Black I V : Ivory

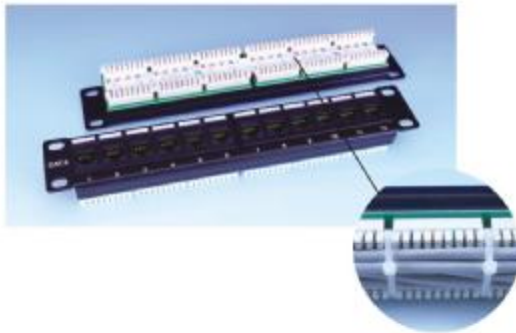
## 19" PCB Module Patch Panel



**X PLDN - X XX X**

CAT. X	TYPE	PORT	PANEL COLOR
E : C5e 6 : C6	U : Unshielded S : Half shielded F : Fully shielded	16 : 16 Ports 24 : 24 Ports	BK : Black I V : Ivory

## 10" PCB Module Patch Panel



**X PLEN - XX X X**

CAT. X	PORT	IDC CAP	PANEL COLOR
E : C5e 6 : C6	08 : 08 Ports 12 : 12 Ports	0 : w / o 1 : w / h	BK : Black I V : Ivory

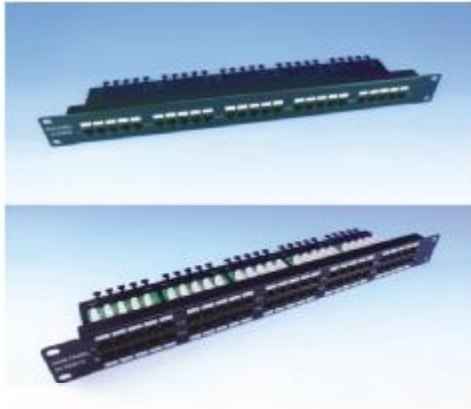


**X PLIN - X XX X**

CAT. X	TYPE	PORT	PANEL COLOR
E : C5e 6 : C6	U : Unshielded S : Half shielded F : Fully shielded	08 : 08 Ports 12 : 12 Ports	BK : Black I V : Ivory

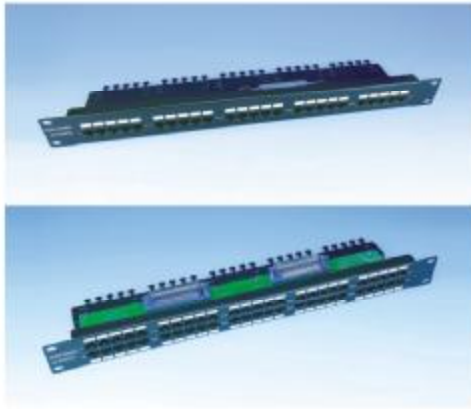


# ISDN Patch Panel



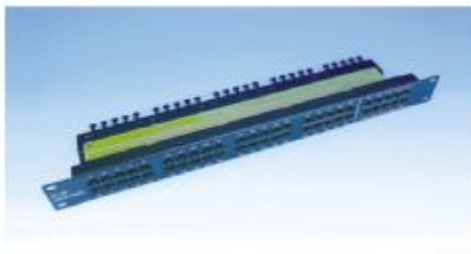
ISDN - XX X X

PORT	PANEL COLOR	PIN OUT
25 : 25 Ports	BK : Black	646 : 6P4C6u
50 : 50 Ports	IV : Ivory	846 : 8P4C6u



ISDN - XX X CN50 X X

PORT	PANEL COLOR	LOCK TYPE	PIN OUT
25 : 25 Ports	BK : Black	S : Screw	646 : 6P4C6u
50 : 50 Ports	IV : Ivory	B : Bail	846 : 8P4C6u

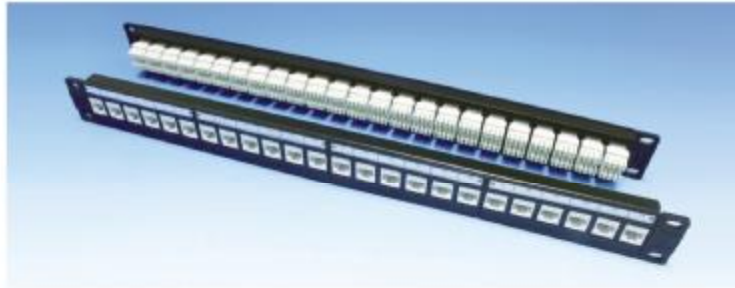


ISDN - 50 X 84886

Jack 8P4C6u (Active Pin 4/5) x 40  
Contact With 8P8C6u x 10

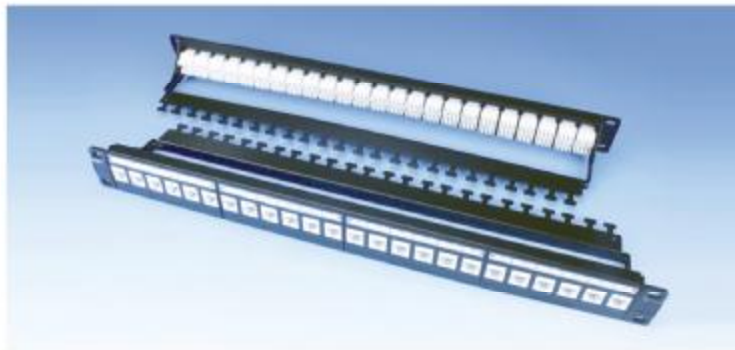
PANEL COLOR
BK : Black
IV : Ivory

## 19" Loaded Patch Panel



**X HPLKP - U XX X X X**

CAT. X	PORT	IDC CAP	PANEL COLOR	KEYSTONE COLOR	
E : C5e 6 : C6	12 : 12 Ports 16 : 16 Ports 24 : 24 Ports 32 : 32 Ports 48 : 48 Ports	0 : w / o 1 : w / h	BK : Black	BK : Black I V : Ivory RD : Red GN : Green WH : White	BL : Blue OR : Orange YL : Yellow GY : Gray



**X HPLKP - U XX X X X RM**

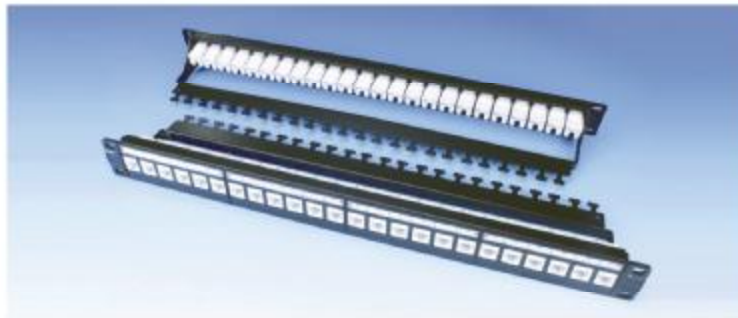
CAT. X	PORT	IDC CAP	PANEL COLOR	KEYSTONE COLOR	
E : C5e 6 : C6	12 : 12 Ports 16 : 16 Ports 24 : 24 Ports 32 : 32 Ports 48 : 48 Ports	0 : w / o 1 : w / h	BK : Black	BK : Black I V : Ivory RD : Red GN : Green WH : White	BL : Blue OR : Orange YL : Yellow GY : Gray

## 19" Loaded Patch Panel



**X VPLKP - U XX X X X**

CAT. X	PORT	IDC CAP	PANEL COLOR	KEYSTONE COLOR	
E : C5e 6 : C6	12 : 12 Ports 16 : 16 Ports 24 : 24 Ports 32 : 32 Ports 48 : 48 Ports	0 : w / o 1 : w / h	BK : Black	BK : Black I V : Ivory RD : Red GN : Green WH : White	BL : Blue OR : Orange YL : Yellow GY : Gray

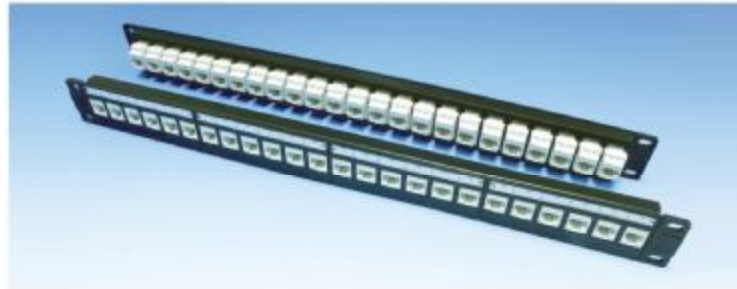


**X VPLKP - U XX X X X RM**

CAT. X	PORT	IDC CAP	PANEL COLOR	KEYSTONE COLOR	
E : C5e 6 : C6	12 : 12 Ports 16 : 16 Ports 24 : 24 Ports 32 : 32 Ports 48 : 48 Ports	0 : w / o 1 : w / h	BK : Black	BK : Black I V : Ivory RD : Red GN : Green WH : White	BL : Blue OR : Orange YL : Yellow GY : Gray

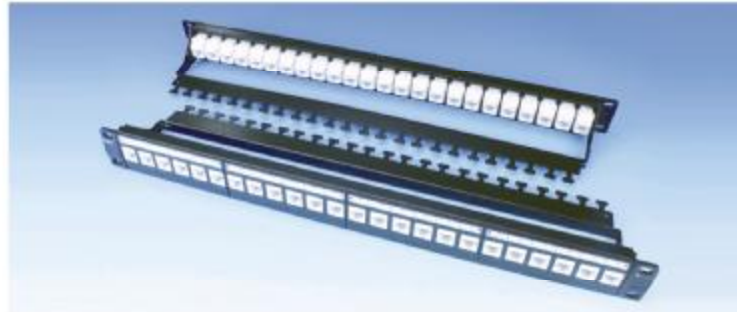
- Module Panel
- Feed Through Patch Panel**
- Unloaded Patch Panel
- Cable R
- Surface Mount Box
- Facej Bac
- LAN T-Mod Adapter & Patch LAN Tester
- Telc 110 Wiring Block
- Acces
- Certificate

## 19" Horizontal Feed-Through Patch Panel



**X JPLKP - U XX X X**

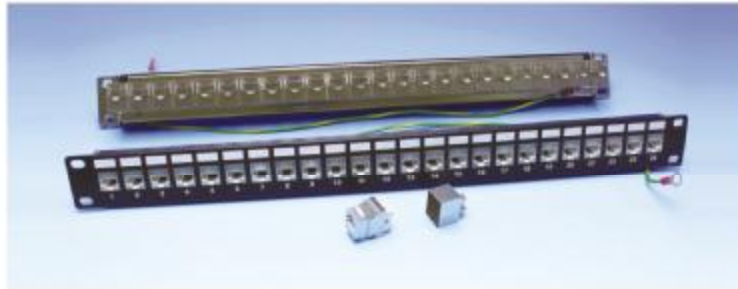
CAT. X	PORT	PANEL COLOR	COUPLER COLOR	
E : C5e 6 : C6	12 : 12 Ports 16 : 16 Ports 24 : 24 Ports 32 : 32 Ports 48 : 48 Ports	BK : Black	BK : Black I V : Ivory RD : Red GN : Green WH : White	BL : Blue OR : Orange YL : Yellow GY : Gray



**X JPLKP - U XX X X RM**

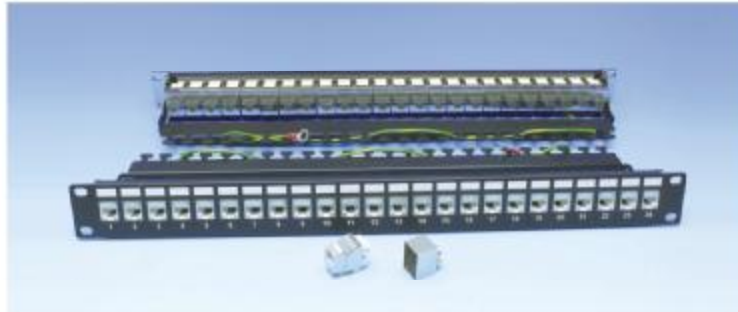
CAT. X	PORT	PANEL COLOR	COUPLER COLOR	
E : C5e 6 : C6	12 : 12 Ports 16 : 16 Ports 24 : 24 Ports 32 : 32 Ports 48 : 48 Ports	BK : Black	BK : Black I V : Ivory RD : Red GN : Green WH : White	BL : Blue OR : Orange YL : Yellow GY : Gray

## 19" Loaded Patch Panel



**X HPLKD - F XX X X X**

CAT. X	PORT	IDC CAP	PANEL COLOR	KEystone COVER
E : C5e 6 : C6	12 : 12 Ports 16 : 16 Ports 24 : 24 Ports 32 : 32 Ports 48 : 48 Ports	0 : w / o 1 : w / h	BK : Black I V : Ivory	MT : Metal TIN : Tin



**X HPLKD - F XX X X X RM**

CAT. X	PORT	IDC CAP	PANEL COLOR	KEystone COVER
E : C5e 6 : C6	12 : 12 Ports 16 : 16 Ports 24 : 24 Ports 32 : 32 Ports 48 : 48 Ports	0 : w / o 1 : w / h	BK : Black I V : Ivory	MT : Metal TIN : Tin

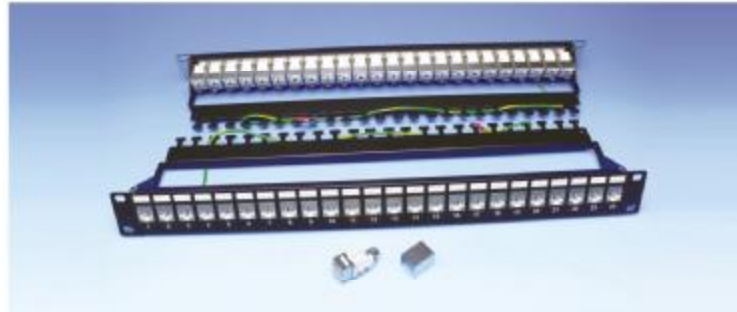
- Module Panel
- Feed Through Patch Panel**
- Unloaded Patch Panel
- Cable W R
- Surface Mount Box
- Facej Bac
- LAN ( T-Mod Adapter & Patch) LAN Tester
- Telc 110 Wiring Block
- Accel
- Certificate

## 19" Loaded Patch Panel



**X VPLKD - F XX X X X**

CAT. X	PORT	IDC CAP	PANEL COLOR	KEystone COVER
E : C5e 6 : C6	12 : 12 Ports 16 : 16 Ports 24 : 24 Ports 32 : 32 Ports 48 : 48 Ports	0 : w / o 1 : w / h	BK : Black I V : Ivory	MT : Metal TIN : Tin



**X VPLKD - F XX X X X RM**

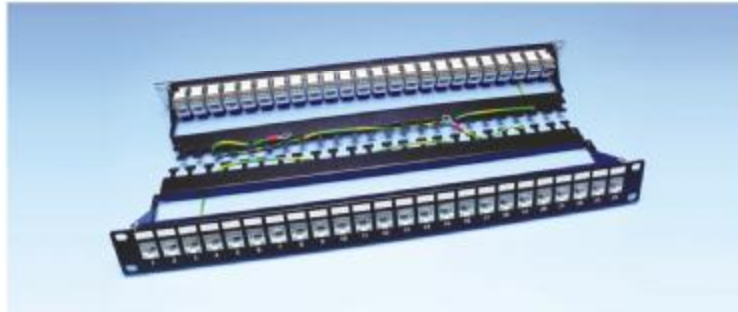
CAT. X	PORT	IDC CAP	PANEL COLOR	KEystone COVER
E : C5e 6 : C6	12 : 12 Ports 16 : 16 Ports 24 : 24 Ports 32 : 32 Ports 48 : 48 Ports	0 : w / o 1 : w / h	BK : Black I V : Ivory	MT : Metal TIN : Tin

## 19" Horizontal Feed-Through Patch Panel



**X JPLKD - F XX X X**

CAT. X	PORT	PANEL COLOR	COUPLER COVER
E : C5e 6 : C6	12 : 12 Ports 16 : 16 Ports 24 : 24 Ports 32 : 32 Ports 48 : 48 Ports	BK : Black I V : Ivory	MT : Metal TIN : Tin



**X JPLKD - F XX X X RM**

CAT. X	PORT	PANEL COLOR	COUPLER COVER
E : C5e 6 : C6	12 : 12 Ports 16 : 16 Ports 24 : 24 Ports 32 : 32 Ports 48 : 48 Ports	BK : Black I V : Ivory	MT : Metal TIN : Tin

- Module Panel
- Feed Through Patch Panel**
- Unloaded Patch Panel
- Cable M R
- Surface Mount Box
- Facej Bac
- LAN ( T-Mod Adapter & Patch) LAN Tester
- Teic 110 Wiring Block
- Acces
- Certificate

## 89 Type Patch Panel

PCB Module  
Patch Panel

89 Series Mini  
Patch Panel

Unit  
Patch

Cable M  
R

Surface  
Mount Box

Facej  
Bac

LAN ( T-Mod Adapter &  
Patch)  
LAN Tester

Teir  
Acce:  
110 Wiring Block

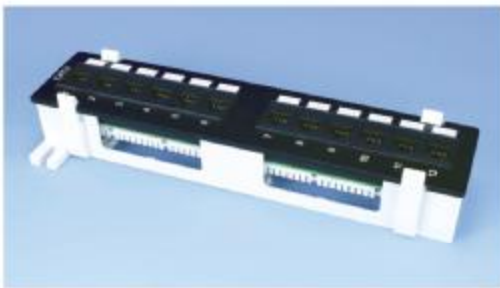
Certificate



X PP89 - 12 X X Plastic Plate

CAT. X	IDC CAP	PANEL COLOR
E : C5e 6 : C6	0 : w / o 1 : w / h	BK : Black WH : White

XPP89M-12XX 110 IDC Block



X PA89 - XX X X Aluminum Plate

CAT. X	PORT	IDC CAP	PANEL COLOR
E : C5e 6 : C6	08 : 08 Ports 12 : 12 Ports	0 : w / o 1 : w / h	BK : Black I V : Ivory

XPA89M-XXXX 110 IDC Block



X PM89 - XX X X Metallic Plate

CAT. X	PORT	IDC CAP	PANEL COLOR
E : C5e 6 : C6	08 : 08 Ports 12 : 12 Ports	0 : w / o 1 : w / h	BK : Black I V : Ivory

XPM89M-XXXX 110 IDC Block



X PP89 - 12 X X L Plastic Plate

CAT. X	IDC CAP	PANEL COLOR
E : C5e 6 : C6	0 : w / o 1 : w / h	BK : Black WH : White

Higher bracket with more room for cables  
XPP89M-12XXL 110 IDC Block



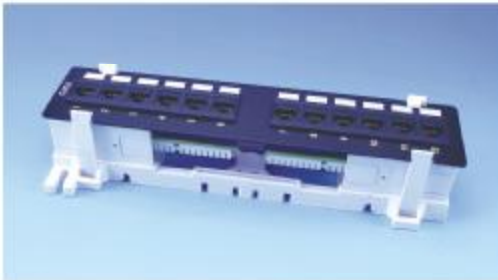
## 89 Type Patch Panel



**X PA89 - XX X X L** Aluminum Plate

CAT. X	PORT	IDC CAP	PANEL COLOR
E : C5e	08 : 08 Ports	0 : w / o	BK : Black
6 : C6	12 : 12 Ports	1 : w / h	I V : Ivory

Higher bracket with more room for cables  
XPA89M-XXXXL 110 IDC Block



**X PM89 - XX X X L** Metallic Plate

CAT. X	PORT	IDC CAP	PANEL COLOR
E : C5e	08 : 08 Ports	0 : w / o	BK : Black
6 : C6	12 : 12 Ports	1 : w / h	I V : Ivory

Higher bracket with more room for cables  
XPM89M-XXXXL 110 IDC Block

## Desk Top Patch Panel



**X PLTN - X XX X**

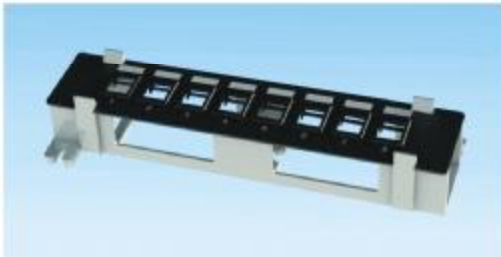
CAT. X	TYPE	PORT	PANEL COLOR
E : C5e	U : Unshielded	08 : 08 Ports	BK : Black
6 : C6	F : Fully shielded	12 : 12 Ports	I V : Ivory

## 89 Type Unloaded Patch Panel



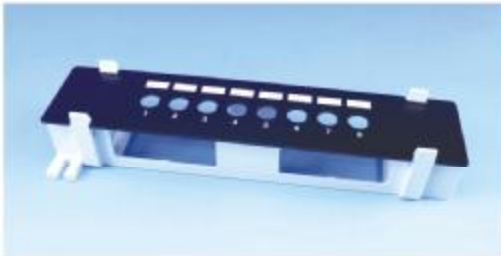
PLK89 - 08 X

PANEL COLOR
BK : Black I V : Ivory



PLK89 - 08 X BZ X

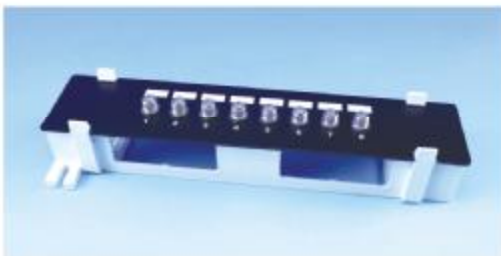
PANEL COLOR	BEZEL COLOR
BK : Black I V : Ivory	BK : Black I V : Ivory



PLK89 - XX X X

PORT	PANEL COLOR	HOLE TYPE
08 : 08 Ports 10 : 10 Ports 12 : 12 Ports	BK : Black I V : Ivory	H : Hex. Hole D : D Hole

## 89 Type AVD Coupler Patch Panel



PLK89 - XX X XX

PORT	PANEL COLOR	AVD COUPLER
08 : 08 Ports 10 : 10 Ports 12 : 12 Ports	BK : Black I V : Ivory	DBNC HF

## 89D/B Type Bracket



**89D - X** Patented

TYPE
F : Fully parts
H : High Hooks
L : Low Hooks
T : Low Hooks for Telecom

**89D - TR X**

TYPE
16 : For 1.6 mm Plate
30 : For 3.0 mm Plate

**89B - TR**

PCB Module  
Patch Panel

**89 Series Mini  
Patch Panel**

Unit  
Patch

Cable M  
R

Surface  
Mount Box

Face/  
Back

LAN Adapter &  
LAN Tester

LAN (Patch)

110 Wiring Block  
Accessories

Certificate

## 19" Unloaded Patch Panel

PCB Module  
Patch Panel

Feed Patch

**Unloaded  
Patch Panel**

Cable M R

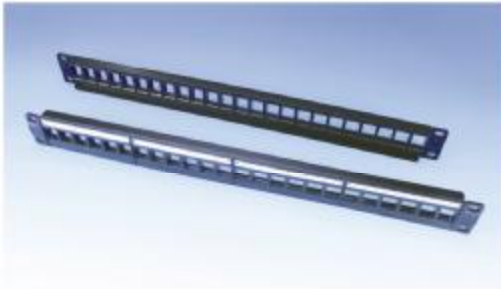
Surface  
Mount Box

Facej  
Bac

T-Mod Adapter &  
LAN Tester  
Patch

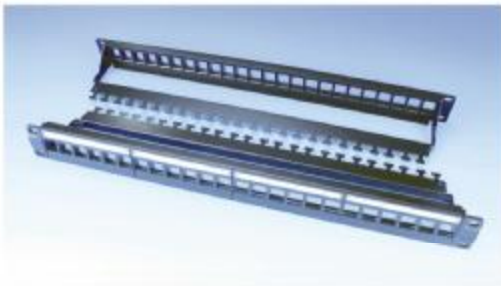
110 Wiring Block  
Access

Certificate



**PLKP - XX X**

PORT	PANEL COLOR
12 : 12 Ports 1U	BK : Black
16 : 16 Ports 1U	
24 : 24 Ports 1U	
32 : 32 Ports 2U	
48 : 48 Ports 2U	



**PLKP - XX X RM**

PORT	PANEL COLOR
12 : 12 Ports 1U	BK : Black
16 : 16 Ports 1U	
24 : 24 Ports 1U	
32 : 32 Ports 2U	
48 : 48 Ports 2U	



**PLKD - XX X**

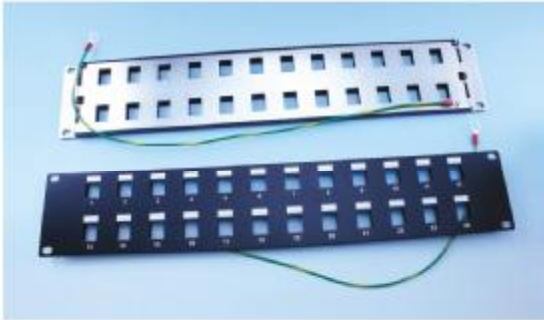
PORT	PANEL COLOR
12 : 12 Ports 1U	BK : Black I V : Ivory
16 : 16 Ports 1U	
24 : 24 Ports 1U	
32 : 32 Ports 2U	
48 : 48 Ports 2U	



**PLKD - XX X RM**

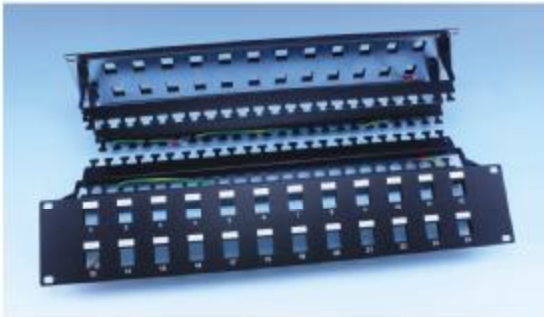
PORT	PANEL COLOR
12 : 12 Ports 1U	BK : Black I V : Ivory
16 : 16 Ports 1U	
24 : 24 Ports 1U	
32 : 32 Ports 2U	
48 : 48 Ports 2U	

## 19" Unloaded Patch Panel



**PLKD - 24 X 2U**

PANEL COLOR
BK : Black I V : Ivory



**PLKD - 24 X 2URM**

PANEL COLOR
BK : Black I V : Ivory

## Brush Cable Manager



**PLMN - H0801U**

1U 19" Horizontal Cable Management  
(Brush Panel)



**PLMN - V0801U**

1U 19" Vertical Cable Management  
(Brush Panel)

PCB Module	Feed 1	Unloaded Patch Panel	Cable M	Surface Mount Box	Facej	T-Mod Adapter & LAN Tester	110 Wiring Block	Certificate
Patch Panel	Patch Panel		R	Mount Box	Bac	LAN ( Patch Panel)	Access	

## 19" Unloaded Patch Panel

PCB Module  
Patch Panel

Feed Patch

**Unloaded  
Patch Panel**

Cable M  
R

Surface  
Mount Box

Facej  
Bac

LAN ( T-Mod Adapter &  
Patch)  
LAN Tester

Telc 110 Wiring Block  
Accer

Certificate



PLK - XX X

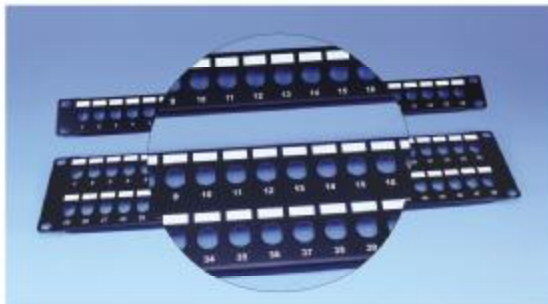
PORT	PANEL COLOR
12 : 12 Ports 1U	BK : Black
16 : 16 Ports 1U	I V : Ivory
24 : 24 Ports 1U	
32 : 32 Ports 2U	
48 : 48 Ports 2U	



PLK - 24 X 2U : 24 Ports 2U For Keystone Insert

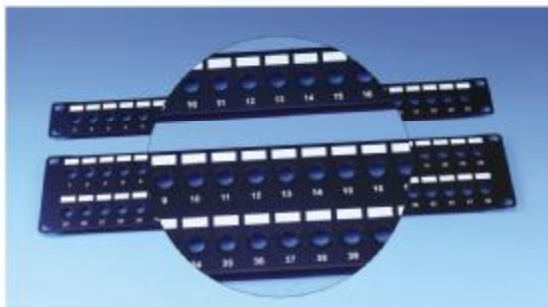
PLK - 48 X 3U : 48 Ports 3U For Keystone Insert

PANEL COLOR
BK : Black
I V : Ivory



PLK - XX X D

PORT	PANEL COLOR
12 : 12 Ports 1U	BK : Black
16 : 16 Ports 1U	I V : Ivory
24 : 24 Ports 1U	
32 : 32 Ports 2U	
48 : 48 Ports 2U	



PLK - XX X H

PORT	PANEL COLOR
12 : 12 Ports 1U	BK : Black
16 : 16 Ports 1U	I V : Ivory
20 : 20 Ports 1U	
24 : 24 Ports 1U	
32 : 32 Ports 2U	
48 : 48 Ports 2U	

# 10" Unloaded Patch Panel



PLKP10 - 12BK



PLK10 - 08 X

PANEL COLOR
BK : Black IV : Ivory



PLK10 - 08 X BZ X

PANEL COLOR	BEZEL COLOR
BK : Black IV : Ivory	BK : Black WH : White



PLK10 - 08 X X

PANEL COLOR	HOLE TYPE
BK : Black IV : Ivory	B : Bezel Hole H : Hex. Hole D : D Hole



PLK10 - 10 X X

PANEL COLOR	HOLE TYPE
BK : Black IV : Ivory	H : Hex. Hole D : D Hole

PCB Module	Feed 1	Unloaded Patch Panel	Surface Mount Box	Face/Back	LAN (T-Mod Adapter & Patch)	Tel: 110 Wiring Block	Certificate
Patch Panel	Patch Panel						

## Cable Manager



- PLMN-01U** : 1U 19" Horizontal Cable Management (Blank Plate)
- PLMN-02U** : 2U 19" Horizontal Cable Management (Blank Plate)
- PLMN-4E1U** : 1U 19" Horizontal Cable Management (Blank Plate 4 Ellipse Holes)
- PLMN-8E2U** : 2U 19" Horizontal Cable Management (Blank Plate 8 Ellipse Holes)
- PLMN-01043** : 1U 19" Horizontal Cable Management (Metal Frame Height : 43mm)
- PLMN-01065** : 1U 19" Horizontal Cable Management (Metal Frame Height : 65mm)
- PLMN-01085** : 1U 19" Horizontal Cable Management (Metal Frame Height : 85mm)
- PLMN-010100** : 1U 19" Horizontal Cable Management (Metal Frame Height : 100mm)
- PLMN-21043** : 2U 19" Horizontal Cable Management (Metal Frame Height : 43mm)
- PLMN-21065** : 2U 19" Horizontal Cable Management (Metal Frame Height : 65mm)
- PLMN-21085** : 2U 19" Horizontal Cable Management (Metal Frame Height : 85mm)
- PLMN-210100** : 2U 19" Horizontal Cable Management (Metal Frame Height : 100mm)



- PLMN-060** : 1U 19" Horizontal Cable Management One Side Trunk (PVC Finger-Canal w/h PVC Cover)
- PLMN-D060** : 1U 19" Horizontal Cable Management Two Side Trunk (PVC Finger-Canal w/h PVC Cover)
- PLMN-260** : 2U 19" Horizontal Cable Management One Side Trunk (PVC Finger-Canal w/h PVC Cover)
- PLMN-D260** : 2U 19" Horizontal Cable Management Two Side Trunk (PVC Finger-Canal w/h PVC Cover)
- PLMN-060MT** : 1U 19" Horizontal Cable Management (Metal Finger-Canal w/h Metal Cover)
- PLMN-260MT** : 2U 19" Horizontal Cable Management (Metal Finger-Canal w/h Metal Cover)
- PLMN-070** : 1U 19" Horizontal Cable Management (PC Frame w/h PVC Cover)
- PLMN-270** : 2U 19" Horizontal Cable Management (PC Frame w/h PVC Cover)
- PLMN-070N** : 1U 19" Horizontal Cable Management DIY Type (PC Frame w/h PVC Cover)
- PLMN-270N** : 2U 19" Horizontal Cable Management DIY Type (PC Frame w/h PVC Cover)
- PLMN-070PPC** : 1U 19" Horizontal Cable Management (PC Frame w/o PVC Cover)



## Wall Mount Bracket



**RACK10-1001U**  
(10"-1U ; Depth : 3")

**RACK-0501U**  
(19"-1U ; Depth : 4")

**RACK-1504U**  
(19"-4U ; Depth : 12")



**RACK-1101U** (Depth : 5.8")  
**RACK-1102U** (Depth : 5.8")  
**RACK-1103U** (Depth : 5.8")  
**RACK-1104U** (Depth : 5.8")  
**RACK-1105U** (Depth : 5.8")  
**RACK-1106U** (Depth : 5.8")

**RACK-110CAP**



### Folding Type

**RACK-110N1U** (Depth : 12.5")  
**RACK-110N2U** (Depth : 12.5")  
**RACK-110N3U** (Depth : 12.5")  
**RACK-110N4U** (Depth : 12.5")  
**RACK-110N5U** (Depth : 12.5")  
**RACK-110N6U** (Depth : 12.5")  
**RACK-110N7U** (Depth : 12.5")  
**RACK-110N8U** (Depth : 12.5")

**RACK-110NCAP**

- PCB Module
- Patch Panel
- Feed Patch Panel
- Cable Manager & Rack
- Surface Mount Box
- Face/Back
- T-Mod Adapter & LAN Tester
- LAN Patch Panel
- 110 Wiring Block
- 110 Access
- Certificate

## Slim Type Keystone Jack

PCB Module  
Patch Panel

Feed Patch

Unloaded Patch Panel

**Keystone Jack & Inline Coupler**

Surf Mount

Face Back

T-Mod Adapter & LAN Tester Patch

110-Wiring Block

Telet. Access

Certificate



**X KTVN - X X X**  
**X KTVM - X X X**

CAT. X	TYPE	IDC CAP	COLOR
E : C5e 6 : C6	U : Unshielded S : Half shielded F : Fully shielded	0 : w / o 1 : w / h	BK : Black IV : Ivory RD : Red GN : Green WH : White BL : Blue OR : Orange YL : Yellow GY : Gray MT : Metal TIN : Tin

XKTVN-XXX Dual IDC Block  
XKTVM-XXX 110 IDC Block

**X KTHN - X X X**

CAT. X	TYPE	IDC CAP	COLOR
E : C5e 6 : C6	U : Unshielded F : Fully shielded	0 : w / o 1 : w / h	BK : Black IV : Ivory RD : Red GN : Green WH : White BL : Blue OR : Orange YL : Yellow GY : Gray MT : Metal TIN : Tin

# Keystone Jack



X KTV - X X X  
 X KTM - X X X

CAT. X	TYPE	IDC CAP	COLOR
E : C5e	U : Unshielded	0 : w / o	BK : Black
6 : C6	S : Half shielded	1 : w / h	I V : Ivory
	F : Fully shielded		RD : Red
			GN : Green
			WH : White
			BL : Blue
			OR : Orange
			YL : Yellow
			GY : Gray
			MT : Metal
			TIN : Tin

XKTV-XXX Dual IDC Block  
 XKTM-XXX 110 IDC Block

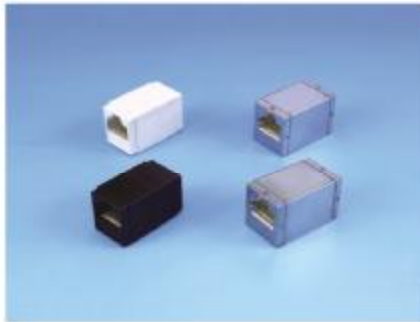


X KTH - X X X

CAT. X	TYPE	IDC CAP	COLOR
E : C5e	U : Unshielded	0 : w / o	BK : Black
6 : C6	S : Half shielded	1 : w / h	I V : Ivory
	F : Fully shielded		RD : Red
			GN : Green
			WH : White
			BL : Blue
			OR : Orange
			YL : Yellow
			GY : Gray
			MT : Metal
			TIN : Tin

- PCB Module
- Patch Panel
- Feed 1 Patch
- Unloaded Patch Panel
- Keystone Jack & Inline Coupler**
- Sun Mou
- Facej Bac
- T-Mod Adapter & LAN Tester
- LAN ( Patch)
- 110 Wiring Block
- Telc Acces
- Certificate

## Inline Coupler



### X IC - X JJHN X

CAT. X	TYPE	COLOR	
E : C5e 6 : C6	U : Unshielded F : Fully shielded	BK : Black IV : Ivory RD : Red WH : White BL : Blue	OR : Orange YL : Yellow GY : Gray MT : Metal TIN : Tin

MT & TIN : fully shielded only ( Metallic case )



### X IC - X KTHN X

CAT. X	TYPE	COLOR	
E : C5e 6 : C6	U : Unshielded F : Fully shielded	BK : Black IV : Ivory RD : Red WH : White BL : Blue	OR : Orange YL : Yellow GY : Gray MT : Metal TIN : Tin

MT & TIN : fully shielded only ( Metallic case )



### X IC - X NJ X

CAT. X	TYPE	COLOR	
E : C5e 6 : C6	U : Unshielded S : Half shielded F : Fully shielded	BK : Black IV : Ivory RD : Red WH : White BL : Blue	OR : Orange YL : Yellow GY : Gray PT : Plated

PT : fully shielded only ( Chromium plated )



### EIC - X JJ X

TYPE	COLOR
U : Unshielded	BK : Black
S : Half shielded	WH : White
F : Fully shielded	PT : Plated

PT : fully shielded only ( Chromium plated )

PCB Module  
Patch Panel

Feed Patch

Unloaded Patch Panel

Keystone Jack & Inline Coupler

Surf Mount

Facej Back

T-Mod Adapter & LAN Tester  
Patch

110 Wiring Block  
Access

Certificate

## Inline Coupler



X IC - X ED X

CAT. X	TYPE	COLOR
E : C5e 6 : C6	U : Unshielded S : Half shielded F : Fully shielded	BK : Black WH : White PT : Plated

PT : fully shielded only ( Chromium plated )

## Crossover Inline Coupler



X IC - X XJJ X

CAT. X	TYPE	COLOR
E : C5e 6 : C6	U : Unshielded S : Half shielded F : Fully shielded	BK : Black WH : White PT : Plated



PT : fully shielded only ( Chromium plated )

## Cat.3 Inline Coupler



3IC-FJJHNTIN886  
3IC-FJJHNTMT886



3IC-UKTHN X 666  
3IC-UKTHN X 886

COLOR
WH : White
IV : Ivory



## Cat.3 Inline Coupler



3IC-FKTHNTIN886  
3IC-FKTHNMT886

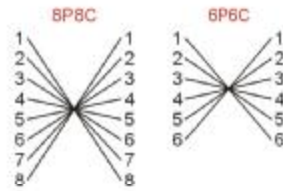


## Cat.3 Crossover Inline Coupler

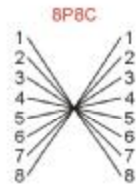


3IC-UXJJHN X 66F  
3IC-UXJJHN X 88F

COLOR
WH : White
I V : Ivory

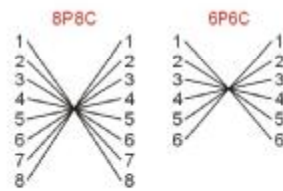


3IC-FXJJHNTIN88F  
3IC-FXJJHNMT88F

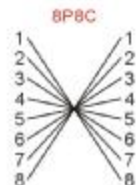


3IC-UXKTHN X 66F  
3IC-UXKTHN X 88F

COLOR
WH : White
I V : Ivory



3IC-FXKTHNTIN88F  
3IC-FXKTHNMT88F



## Universal Data Box



**BK - X X**

PORT	COLOR
1 : 1 Port	WH : White
2 : 2 Ports	I V : Ivory
4 : 4 Ports	
6 : 6 Ports	
8 : 8 Ports	



**RBK - X X**

PORT	COLOR
1 : 1 Port	WH : White
2 : 2 Ports	I V : Ivory

## Surface Mount Box



**X BX - X X X**

CAT. X	TYPE	PORT	COLOR
E : C5e	U : Unshielded	1 : 1 Port RJ45	WH : White
6 : C6	S : Half shielded	2 : 2 Ports RJ45	I V : Ivory



**X BXM - U1 X** Mini box

CAT. X	COLOR
E : C5e	WH : White
6 : C6	I V : Ivory

PCB Module  
Patch Panel  
Feed Patch  
Unloaded Patch Panel  
Cable M R  
**Surface Mount Box**  
Face Bac  
T-Mod Adapter & LAN Tester  
LAN Patch  
Tel: 110 Wiring Block  
Access  
Certificate

## Surface Mount Box

PCB Module  
Patch Panel

Feed Patch

Unloaded Patch Panel

Cable M R

**Surface Mount Box**

Face Bac

T-Mod Adapter & LAN Tester Patch

110 Wiring Block Access

Certificate



**X VBK - U X X**

CAT. X	PORT	COLOR
3 : C3	1 : 1 Port	WH : White
E : C5e	2 : 2 Ports	I V : Ivory
6 : C6	4 : 4 Ports	
	6 : 6 Ports	
	8 : 8 Ports	



**X VBK - F X X X**

CAT. X	PORT	BOX COLOR	KEystone COVER
E : C5e	1 : 1 Port	WH : White	MT : Metal
6 : C6	2 : 2 Ports	I V : Ivory	TIN : Tin
	4 : 4 Ports		
	6 : 6 Ports		
	8 : 8 Ports		



**X VRBK - U X X**

CAT. X	PORT	COLOR
E : C5e	1 : 1 Port	WH : White
6 : C6	2 : 2 Ports	I V : Ivory



**X VRBK - F X X X**

CAT. X	PORT	BOX COLOR	KEystone COVER
E : C5e	1 : 1 Port	WH : White	MT : Metal
6 : C6	2 : 2 Ports	I V : Ivory	TIN : Tin



## Faceplate & Accessories



**FPLA - X X**

PORT	COLOR
0 : Blank 70 x 115 mm	WH : White IV : Ivory
1 : 1 Port 70 x 115 mm	
2 : 2 Ports 70 x 115 mm	
3 : 3 Ports 70 x 115 mm	
4 : 4 Ports 70 x 115 mm	
6 : 6 Ports 70 x 115 mm	



**FPLA - 0 X X H**

COLOR	PORT
WH : White IV : Ivory	1 : 1 Hex. Hole 70 x 115 mm
	2 : 2 Hex. Holes 70 x 115 mm
	3 : 3 Hex. Holes 70 x 115 mm



**FPLB - X X**

PORT	COLOR
1 : 1 Port 70 x 115 mm Hole 25 x 50 mm	WH : White IV : Ivory
2 : 2 Ports 70 x 115 mm Hole 50 x 50 mm	



**FPLC - X X**

PORT	COLOR
2 : 2 Port 86 x 86 mm Hole 50 x 50 mm	WH : White IV : Ivory
4 : 4 Ports 86 x 146 mm Hole 50 x 100 mm	

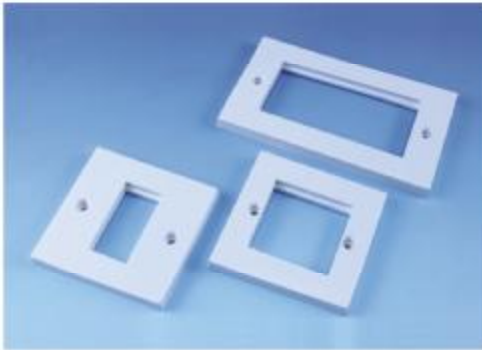
- PCB Module
- Patch Panel
- Feed 1 Patch
- Unloaded Patch Panel
- Cable M R
- Face Box
- Faceplate & Back Box**
- T-Mod Adapter & LAN Tester
- LAN Patch
- 110 Wiring Block
- Terminator Access
- Certificate

## Faceplate & Accessories



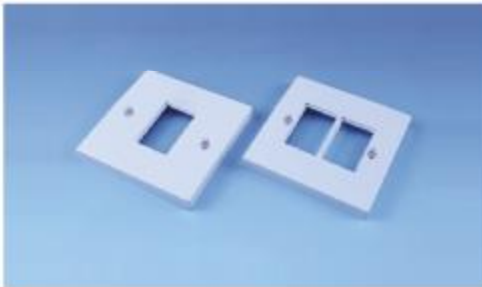
**FPLCS - X X**

PORT	COLOR
2 : 2 Ports 80 x 80 mm Hole 50 x 50 mm	WH : White I V : Ivory



**FPLD - X X**

PORT	COLOR
1 : 1 Port 86 x 86 mm Hole 25 x 50 mm	WH : White I V : Ivory
2 : 2 Ports 86 x 86 mm Hole 50 x 50 mm	
4 : 4 Ports 86 x 146 mm Hole 50 x 100 mm	



**FPL6C - X X**

PORT	COLOR
1 : 1 Port 86 x 86 mm Inner Hole 25 x 38.5 mm	WH : White I V : Ivory
2 : 2 Ports 86 x 86 mm Inner Hole 25 x 38.5 mm	



**FPLM - X X**

PORT	COLOR
2 : 2 Ports 60 x 60 mm Hole 50 x 50 mm	WH : White I V : Ivory

PCB Module  
Patch Panel

Feed Patch

Unloaded  
Patch Panel

Cable M  
R

Face  
Box

**Faceplate &  
Back Box**

T-Mod Adapter &  
LAN Tester

LAN Patch

110-Wiring Block

Accessories

Certificate

## Faceplate & Accessories

<b>FPLE - 2 X A</b> 80 x 80 mm , Inner Hole 45 x 45 mm	<b>FPLEK - 2 X A</b> 80 x 80 mm , Inner Hole 45 x 45 mm	<b>FPLEP - 2WHA</b> 80 x 80 mm , Inner Hole 45 x 45 mm

<b>FBB - 1 X</b>	<b>FBB - 2 X</b>	<b>FCB - 02 X</b>	<b>FCB - 002 X</b>

<b>FCB - 004 X</b>	<b>FCB - 1 X</b>	<b>FCB - 2 X</b>	<b>FCB - 4 X</b>

<b>FCSB - 02 X</b>	<b>FCSB - 002 X</b>	<b>FCSB - 1 X</b>	<b>FCSB - 2 X</b>

**X**

COLOR
WH : White
IV : Ivory

- PCB Module
- Patch Panel
- Feed 1
- Patch
- Unloaded
- Patch Panel
- Cable M
- R
- Face
- Box
- Faceplate & Back Box**
- T-Mod Adapter &
- LAN Tester
- LAN (
- Patch
- 110 Wiring Block
- Access
- Certificate

## Faceplate & Accessories

<b>FDB - 01 X</b>	<b>FDB - 02 X</b>	<b>FDB - 002 X</b>	<b>FDB - 004 X</b>
<b>FDB - 1 X</b>	<b>FDB - 2 X</b>	<b>FDB - 4 X</b>	<b>FEB - 1 X A</b>
<b>FEB - 2 X A</b>	<b>FEB - 1 X AL</b>	<b>FEB - 2 X AL</b>	<b>FEKB - 1 X A</b>
<b>FEKB - 2 X A</b>	<b>FEKB - 1 X AL</b>	<b>FEKB - 2 X AL</b>	<b>FEPB - 1WHA</b>
<b>FEPB - 2WHA</b>	<b>FMB - 1 X</b>	<b>FMB - 2 X</b>	<b>FMB - 02 X</b>

<b>X</b>
COLOR
WH : White
I V : Ivory

## MultiMedia Keystone Insert

<b>KSRX-0</b>	<b>KSRX-H</b>	<b>KSRX-D</b>	<b>KSRX-HF</b>
<b>KSRX-DBNC</b>	<b>KSRX-HPALF</b>	<b>KSRX-DDIN4</b>	<b>KSRX-HFGP</b>
<b>KSRX-HBPBKGP</b>	<b>KSRX-HBPRDGP</b>	<b>KSRX-DRCARD</b>	<b>KSRX-DRCAYL</b>
<b>KSRX-DRCAWH</b>	<b>KSRX-DRCABL</b>	<b>KSRX-DRCAGN</b>	<b>KSRX-HRCARDGP</b>
<b>KSRX-HRCAYLGP</b>	<b>KSRX-HRCAWHGP</b>	<b>KSRX-HRCABLGP</b>	<b>KSRX-HRCAGNGP</b>
<b>KSRX-HRCARDFGP</b>	<b>KSRX-HRCAYLFGP</b>	<b>KSRX-HRCAWHFGP</b>	<b>KSRX-HRCABLFGP</b>
<b>KSRX-HRCAGNFGP</b>	<b>KSR-AHDMIWH</b>	<b>KSR-AUSB2WH</b>	<b>KSR-AUSB3WH</b>

X	KSR COLOR
	WH : White
	IV : Ivory

PCB Module  
Patch Panel  
Feed 7  
Patch Panel  
Unloaded  
Patch Panel  
Cable M  
R  
Faceplate &  
Back Box  
T-Mod Adapter &  
LAN Tester  
LAN ( Patch Panel  
110 Wiring Block  
Tel: 110  
Access:  
Certificate

## Faceplate & Accessories

		
FPLF-1WH	FPLF-2WH	FPLF-4WH

## Back Box

			
FBX-808045R1 X	FBX-808045R4 X	FBX-868645R1 X	FBX-868645R4 X

		
FBX-7011540R2 X	FBX-7011548R1 X	FBX-7512050R2 X

<b>X</b>
COLOR
WH : White
IV : Ivory

## PCB Module Wall Outlet



**X A - X X**

CAT. X	PORT	PLATE COLOR
E : C5e	1 : 1 Port	WH : White
6 : C6	2 : 2 Ports	I V : Ivory
	4 : 4 Ports	



**X A - X X 1HF**

CAT. X	PORT	PLATE COLOR
E : C5e	1 : 1 Port	WH : White
6 : C6	2 : 2 Ports	I V : Ivory



**X BA - X X**

CAT. X	PORT	PLATE COLOR
E : C5e	1 : 1 Port	WH : White
6 : C6	2 : 2 Ports	I V : Ivory



**X BB - X X**

CAT. X	PORT	PLATE COLOR
E : C5e	1 : 1 Port	WH : White
6 : C6	2 : 2 Ports	I V : Ivory

## PCB Module Wall Outlet



**X CA - X X X**

CAT. X	TYPE	PORT	PLATE COLOR
E : C5e	U : Unshielded	1 : 1 Port	WH : White
6 : C6	S : Half shielded	2 : 2 Ports	IV : Ivory
		4 : 4 Ports	



**X CB - X X X**

CAT. X	TYPE	PORT	PLATE COLOR
E : C5e	U : Unshielded	1 : 1 Port	WH : White
6 : C6	S : Half shielded	2 : 2 Ports	IV : Ivory
		4 : 4 Ports	



**X CSA - X X X**

CAT. X	TYPE	PORT	PLATE COLOR
E : C5e	U : Unshielded	1 : 1 Port	WH : White
6 : C6	S : Half shielded	2 : 2 Ports	IV : Ivory



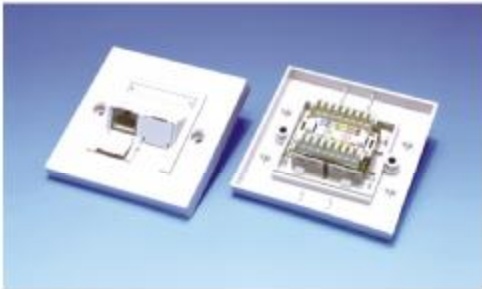
**X CSB - X X X**

CAT. X	TYPE	PORT	PLATE COLOR
E : C5e	U : Unshielded	1 : 1 Port	WH : White
6 : C6	S : Half shielded	2 : 2 Ports	IV : Ivory

PCB Module Patch Panel  
 Feed Patch  
 Unloaded Patch Panel  
 Cable M R  
 Surface Mount Box  
**Wall Outlet**  
 LAN ( T-Mod Patch) LAN  
 Tel: 110-Wiring Block  
 Acces:  
 Certificate



## PCB Module Wall Outlet



**X DA - X X X**



CAT. X	TYPE	PORT	PLATE COLOR
E : C5e	U : Unshielded	1 : 1 Port	WH : White
6 : C6	S : Half shielded	2 : 2 Ports	IV : Ivory
		4 : 4 Ports	



**X DB - X X X**



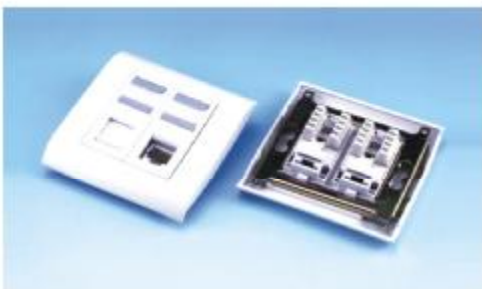
CAT. X	TYPE	PORT	PLATE COLOR
E : C5e	U : Unshielded	1 : 1 Port	WH : White
6 : C6	S : Half shielded	2 : 2 Ports	IV : Ivory
		4 : 4 Ports	



**X FA - X X X**



CAT. X	TYPE	PORT	PLATE COLOR
E : C5e	U : Unshielded	1 : 1 Port	WH : White
6 : C6	S : Half shielded	2 : 2 Ports	IV : Ivory



**X FB - X X X**



CAT. X	TYPE	PORT	PLATE COLOR
E : C5e	U : Unshielded	1 : 1 Port	WH : White
6 : C6	S : Half shielded	2 : 2 Ports	IV : Ivory

## Snap Optional Accessories

			
<b>SNP-B012.550X</b>	<b>SNP-B02550X</b>	<b>SNP-B05050X</b>	<b>SNP-B2550X</b>

			
<b>SNP-B22.545XAL</b>	<b>SNP-B4545XAL</b>	<b>SNP-B22.545XA</b>	<b>SNP-B4545XA</b>

		
<b>SNP-B45451WH</b>	<b>SNP-B45452WH</b>	<b>SNP-A2550X</b>

X
COLOR
WH : White
I V : Ivory

PCB Module  
Patch Panel

Feed Patch

Unloaded Patch Panel

Cable M R

Surface Mount Box

Wall Outlet

LAN ( T-Mod / Patch) LAN

110 Wiring Block

Certificate

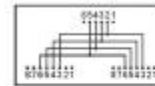
## T MOD Adaptor



**3TMD - UCJJ X T64**

COLOR
BK : Black
IV : Ivory
WH : White

Wiring Layout Reference



**ETMD - X JJJ X T**

TYPE	COLOR
U : Unshielded	BK : Black
S : Half shielded	IV : Ivory
F : Fully shielded	WH : White
	PT : Plated

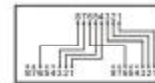
Wiring Layout Reference



**X TMD - X CJJ X**

CAT. X	TYPE	COLOR
E : C5e	U : Unshielded	BK : Black
6 : C6	S : Half shielded	IV : Ivory
	F : Fully shielded	WH : White
		PT : Plated

Wiring Layout Reference



**PT : fully shielded only ( Chromium plated )**

# T MOD Adaptor

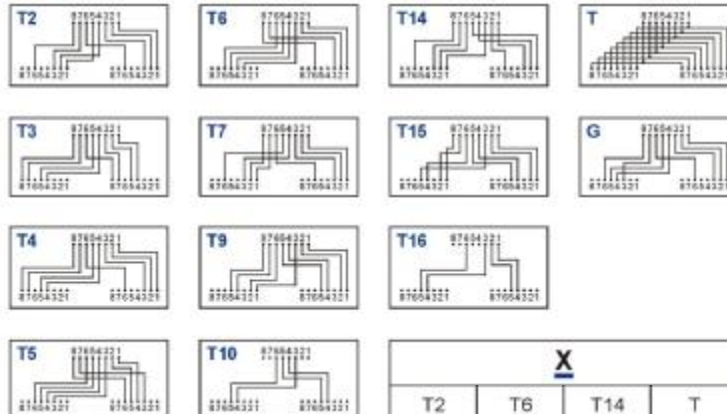


**X ETMD - X CJJ X X**

CAT. X	TYPE	COLOR
E : C5e 6 : C6	U : Unshielded S : Half shielded F : Fully shielded	BK : Black I V : Ivory WH : White PT : Plated

**PT : fully shielded only ( Chromium plated )**

### Wiring Layout Reference



<b>X</b>			
T2	T6	T14	T
T3	T7	T15	G
T4	T9	T16	
T5	T10		

PCB Module  
Patch Panel

Feed Patch

Unloaded Patch Panel

Cable M R

Surface Mount Box

Facej Bac

**T-Mod Adaptor & LAN Tester**

LAN Patch

110 Wiring Block  
Access

Certificate

# LAN Cable Tester

## LT-100 Specification

Test RJ45 (UTP / STP) , RJ12 , RJ11 , RJ9 , BNC cable  
Additional spare battery & two 6P to 4P inserts included in the remote box  
Power : DC 9V battery  
CE approved  
Identifies open , shorted , crossed , reversed and transposed wires  
Maximum test length : 1000ft



LT-100B (Blister Pack)

LT-100L (Leather Pack)

**DO NOT USE ON ALIVE CIRCUIT**

## LT-200 Specification

Test RJ45 (8P8C) , (UTP / STP)  
Power : DC 9V battery  
CE approved  
Identifies open , shorted , crossed , reversed and transposed wires  
Maximum test length : 1000ft  
Master unit Provides patch cord function test



LT-200

**DO NOT USE ON ALIVE CIRCUIT**

PCB Module	Patch Panel
Feed 7	Patch Panel
Unloaded	Patch Panel
Cable W	R
Surface	Mount Box
Facej	Bac
<b>T-Mod Adapter &amp; LAN Tester</b>	
LAN C	Patc
Telc	110 Wiring Block
Acces	
Certificate	

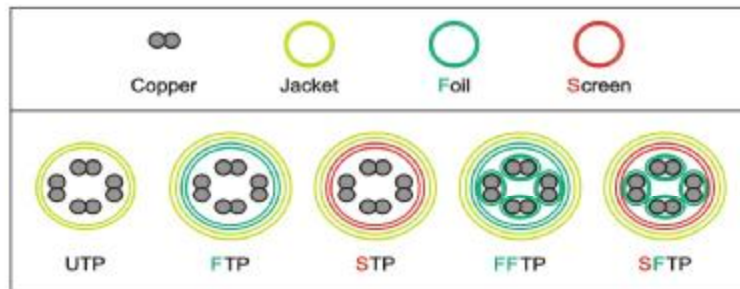
## Twisted Pair LAN Cable



CBLC - X X X X X

CAT. X	TYPE	CABLE TYPE	OUTER JACKET COLOR		OUTER JACKET MATERIAL
E : C5e 6 : C6	UTP FTP STP FFTP SFTP	0 : Strand wire 1 : Solid wire	BK : Black IV : Ivory RD : Red GN : Green WH : White	BL : Blue OR : Orange YL : Yellow GY : Gray	PE : PE Compound PVC : PVC Compound LSZH : LSZH Compound

Type Reference :



## Patch Cord

CBL - X X X X X



CAT. X	BOOT	TYPE	LENGTH	OUTER JACKET COLOR	
E : C5e 6 : C6	0 : w/o Boot 1 : Assembly 2 : Molded	UTP FTP STP	XFT : X feet XM : X meter	BK : Black IV : Ivory RD : Red GN : Green WH : White	BL : Blue OR : Orange YL : Yellow GY : Gray

## Plug



**P - X X X X**

TYPE	STYLE	POSITION & CONTACT	GOLD PLATED
U : Unshielded S : Shielded	0 : 3 prong for solid wire 1 : 2 prong for strand wire 2 : w/h insert for solid wire 3 : w/h insert for strand wire 4 : Hirose type (shielded only) 5 : 2 prong Y type for solid wire	88 : 8P8C 86 : 8P6C 66 : 6P6C 64 : 6P4C 44 : 4P4C	F : Flash 6 : 6u 15 : 15u 30 : 30u 50 : 50u



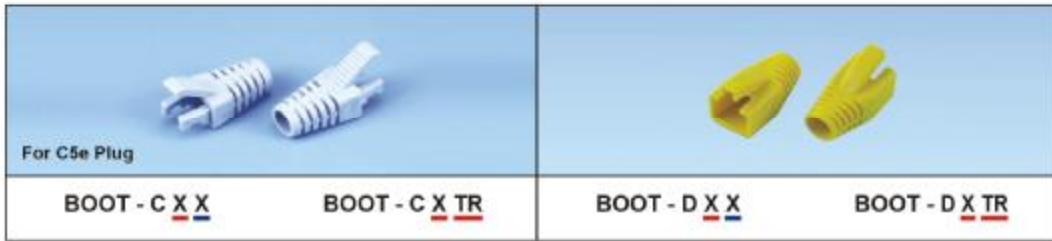
- X : TRANSPARENT**
- BK : Black
  - RD : Red
  - GN : Green
  - WH : White
  - BL : Blue
  - OR : Orange
  - YL : Yellow
  - GY : Gray
  - PU : Purple

**6PG - H X X X X CAT.6 Plug (Patented)**

TYPE	STYLE
U : Unshielded S : Shielded	0 : 3 prong for solid wire 1 : 2 prong for strand wire 2 : 2 prong Y type for solid wire

CABLE CLIP BAR	
	0 : Movable flat bar
	1 : ID : 4.5mm Movable arc bar
	2 : ID : 5.3mm Movable arc bar
	3 : Fixed bar for molding

## BOOT



**X : BOOT I.D**

- 5.0 : 5.0 mm
- 5.5 : 5.5 mm
- 6.0 : 6.0 mm
- 6.5 : 6.5 mm
- 7.0 : 7.0 mm
- 7.5 : 7.5 mm
- 8.0 : 8.0 mm

**X : BOOT Color**

- BK : Black
- IV : Ivory
- RD : Red
- GN : Green
- WH : White
- OR : Orange
- YL : Yellow
- GY : Gray

**TR : Transparent**

PCB Module  
Patch Panel

Feed Patch

Unloaded Patch Panel

Cable M R

Surface Mount Box

Facej Bac

T-Mod Adapter & LAN Tester

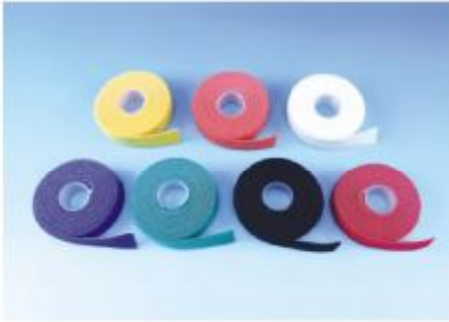
Plug, Boot & Cable Tie

Telc 110 Wir  
Acces

Certificate



## Cable Tie



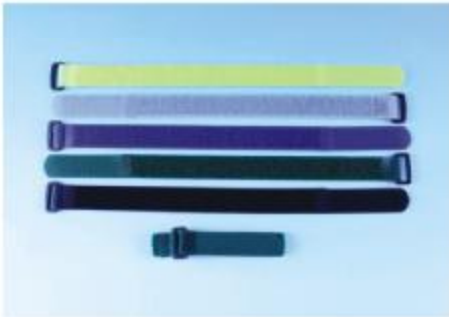
**GTM-XX XX XX** Mushroom Hook Type

WIDTH	LENGTH	COLOR	
10 : 10 mm	01 : 1 M	BK : Black	BL : Blue
12 : 12 mm	03 : 3 M	RD : Red	OR : Orange
13 : 13 mm	05 : 5 M	GN : Green	YL : Yellow
19 : 19 mm	10 : 10 M	WH : White	
20 : 20 mm	20 : 20 M		
25 : 25 mm	25 : 25 M		



**VTM-12 XX XX** Mushroom Hook Type

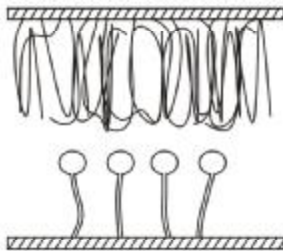
WIDTH	LENGTH	COLOR	
12 : 12 mm	05 : 5 inches	BK : Black	BL : Blue
	06 : 6 inches	RD : Red	OR : Orange
	08 : 8 inches	GN : Green	YL : Yellow
	09 : 9 inches	WH : White	



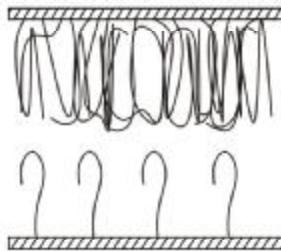
**RTH-20 30 XX** Hook Type

WIDTH	LENGTH	COLOR	
20 : 20 mm	30 : 30 cm	BK : Black	BL : Blue
		RD : Red	OR : Orange
		GN : Green	YL : Yellow
		WH : White	

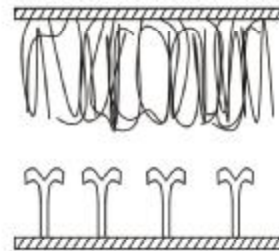
Mushroom Hook Type



Hook Type



Injection Hook Type



# 110 Wiring Block Series



**TSK5-X**

DESCRIPTION
50 : 50 Pairs , w/o Leg , w/h Label Holder
100 : 100 Pairs , w/o Leg , w/h Label Holder
50L : 50 Pairs , w/h Leg , w/h Label Holder
100L : 100 Pairs , w/h Leg , w/h Label Holder
100P : 100 Pairs , w/h 19"-1U Panel , w/h Label Holder
200P : 200 Pairs , w/h 19"-1U Panel , w/h Label Holder
300P : 300 Pairs , w/h 19"-1U Panel , w/h Label Holder
400P : 400 Pairs , w/h 19"-1U Panel , w/h Label Holder



**TIDC-X**

PAIR
4 : 4 Pairs
5 : 5 Pairs



**TPG-X**

PAIR
1 : 1 Pair
2 : 2 Pairs
4 : 4 Pairs



**TWH  
TWH-L  
TWH-1P**



PI	Annex	Dust cover	89B Bracket	Label Holder
T66-50				X
T66-50D		X		X
T66-50B			X	X
T66-50BD		X	X	X







**TPCX-110 X X XM**

PAIR BASIS	PLUG TYPE	CABLE COLOR	LENGTH
1 : 1 Pair basis	11 : RJ11	WH : White	1 : 1M
2 : 2 Pairs basis	45 : RJ45	GY : Gray	1.5 : 1.5M
4 : 4 Pairs basis	110 : 110 Plug		2 : 2M
			3 : 3M

## Telecom Accessories

		
<b>TCM-X</b> Connection Module X : 5 ; 8 ; 10 Pairs	<b>TDM-X</b> Disconnection Module X : 5 ; 8 ; 10 Pairs	<b>TSM-X</b> Switching Module X : 5 ; 8 ; 10 Pairs

		
<b>TPM3A23010-X</b> 3-pole arrester inserted arrester : 230V/10KA X : 5 ; 8 ; 10 Pairs	<b>TQSC-UY2</b> Telecom quick splice connector for 2 wires insulation OD : 2.8mm cable : 22~26 AWG w/h Gel	<b>TQSC-UR</b> Telecom quick splice connector for 2 or 3 wires insulation OD : 1.52mm cable : 19~26 AWG w/h Gel

 For 5 pair module	 For 8 pair module	 For 10 pair module	
<b>TMF5-X</b> Telecom square steel mounting frame for telecom module insert X : 5~310 pairs	<b>TMF8-X</b>	<b>TMF10-X</b>	<b>TDMBP-X</b> Telecom disconnection module break plug



- TMTTC-262X** : 2 poles test plug w/h cable to 6P2C plug 1.5M
- TMTTC-464X** : 4 poles test plug w/h cable to 6P4C plug 1.5M
- TMTTC-22AX** : 2 poles test plug w/h cable to alligator clip x2 pcs. 1.5M
- TMTTC-44AX** : 4 poles test plug w/h cable to alligator clip x2 pcs. 1.5M

X
COLOR
IV : Ivory
RD : Red
GN : Green
WH : White
BL : Blue
OR : Orange
YL : Yellow
GY : Gray

PCB Module  
 Patch Panel  
 Feed  
 Patch  
 Unloaded  
 Patch Panel  
 Cable  
 R  
 Surface  
 Mount Box  
 Face  
 Back  
 T-Mod Adapter &  
 LAN Tester  
 LAN  
 Patch  
 Block  
 Telecom  
 Accessories  
 Certificate

## Telecom Accessories

<p><b>TBXC10-030N</b> For 30 pairs telecom module Snap lock box</p>	<p><b>TBXUK10-050T</b> For 50 pairs telecom module Tenon lock box</p>	<p><b>TBXUK10-010T</b> For 100 pairs telecom module Tenon lock door</p>
<p><b>TBXD10-030C</b> For 30 pairs telecom module Coin lock door</p>	<p><b>TBXD10-050C</b> For 50 pairs telecom module Coin lock door</p>	<p><b>TBXD10-0100C</b> For 100 pairs telecom module Coin lock door</p>
<p><b>TBXD10-030K</b> For 30 pairs telecom module key lock door</p>	<p><b>TBXD10-050K</b> For 50 pairs telecom module key lock door</p>	<p><b>TBXD10-0100K</b> For 100 pairs telecom module key lock door</p>
<p><b>TST1910-200</b> For 10 pair circle-grapnel bottom module insert ; 200 pairs DIY Package</p>	<p><b>TST1010-100</b> For 10 pair circle-grapnel bottom module insert ; 100 pairs DIY Package</p>	<p><b>TSTW10-100</b> For 10 pair circle-grapnel bottom module insert ; 100 pairs</p>

## Tool Series

<p><b>TOL-501</b></p> <p>UTP / FTP cable cutter</p>	<p><b>TOL-S03</b></p> <p>Stripping tool for round cable</p>	<p><b>TOL-S501B</b></p> <p>Stripping tool for round cable thumb screw adjustable</p>	<p><b>TOL-S01</b> <b>TOL-SP01</b></p> <p>For stripping wire diameter about <math>\varnothing 5 - \varnothing 6.2\text{mm}</math> ( TOL-SP01w/h punch sheet )</p>
<p><b>TOL-01A</b></p> <p>Punch down tool for AT&amp;T</p>	<p><b>TOL-01K</b></p> <p>Punch down tool for KRONE</p>	<p><b>TOL-K02</b></p> <p>Punch down tool for KRONE</p>	<p><b>TOL-364BR</b></p> <p>Punch down tool for 110/88 type</p>
<p><b>TOL-364BKR</b></p> <p>Punch down tool for KRONE type</p>	<p><b>TOL-364KR</b></p> <p>Punch down tool for KRONE type w/h scissor</p>	<p><b>TOL-KTHN</b></p> <p>Speed-Term tool for KTHN keystone jack</p>	<p><b>TOL-KTVN</b></p> <p>Speed-Term tool for KTVN keystone jack</p>

PCB Module	Feed 7	Unloaded	Cable W	Surface	Facej	T-Mod Adapter &	LAN (	110 Wiring Block	Tools
Patch Panel	Patcl	Patch Panel	R	Mount Box	Bac	LAN Tester	Patcl		

## Tool Series

<b>TOL-P01</b> 8 Contact (RJ-45) module telephone plug crimping tool	<b>TOL-P02</b> For RJ-12 and RJ-45 modular 6 & 8 way connectors Includes cutter and outer sheath stripper	<b>TOL-P03</b> Professional modular crimping and stripping tool for crimping 4P,6P,6PDEC,8P	<b>TOL-P04</b> Professional modular crimping and stripping tool for crimping 4P,6P,8P,10P

<b>TOL-L2182R</b> Crimping tool for RJ-45 with strip & cut	<b>TOL-2076C</b> Multi function crimping tool, for 4P, 6P & 8P	<b>TOL-2096C</b> Modular crimping tools for 6P6C/RJ-12, 6P4C/ RJ-11 & 6P2C w/h strip & cut	<b>TOL-26B</b> Crimping tool for 6P & British plug

<b>TOL-105</b> Telecom splices crimping tool economic type	<b>TOL-F03</b> For cutting Kevlar of fiber optic cable	<b>TOL-F01</b> Fiber optic crimping tool Hex size : 0.042" , 0.068" , 0.133" , 0.162" , 0.195" ( Oval type )	<b>TOL-F04</b> Fiber optic stripper for stripping outer jacket 900µm buffer insulation 250µm acrylate coating

# Certificate



3933 US Route 11  
 Cortland, New York 13045 USA  
 Phone Number: (800) 345-3851  
 Fax Number: (607) 758-6637  
 Web: www.intertek.com

## ETL Verified Certificate of Conformance Number: 100495486CRT-001a

On the basis of the tests undertaken, the sample(s) of the below product have been found to comply with the essential requirements of the referenced specifications at the time the tests were carried out.

**Applicant:**

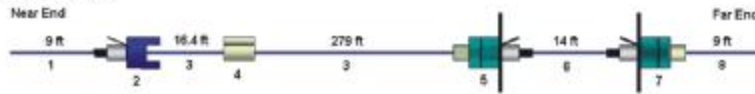
EPNew Electronics Co., Ltd  
 7F, No.5 Lane,163 Shin Yi Road  
 Ban-Ciao District  
 Taipei, Taiwan, R.O.C.  
 Contact: Mr. Yutai Liang

**Manufacturer:**

EPNew Electronics Co., Ltd  
 7F, No.5 Lane,163 Shin Yi Road  
 Ban-Ciao District  
 Taipei, Taiwan, R.O.C.  
 Contact: Mr. Yutai Liang

**Verification/Report Number:** 100457308CRT-001a

**Product Tested:**



Component ID	Manufacturer	Part Number	Description
1, 8	EPNew	ECBLP	Equipment Cord
2	EPNew	EKT	Wall Outlet
3	EPNew	ECBLC	Horizontal Cable
4	EPNew	EICED	110 Block
5, 7	EPNew	EPL	Patch Panel
6	EPNew	ECBLP	Equipment Cord

**Standard(s)/Specification:** ANSI/TIA-568-C.2 Category 5e with the applicable electrical transmission characteristics

**Product(s) Literature May Include:** ETL Verified -Connector Channel to ANSI/TIA-568-C.2 Category 5e, along with channel illustration, and parts numbers.

Continuing compliance to this specification is monitored through production testing, quarterly inspections by Intertek at the production facility and random sample testing.

**Date Verified:** 8/31/2011

**Approved By:**

*Kathy Heath*  
 Kathy Heath, Program Coordinator

*Antoine Pelletier*  
 Antoine Pelletier, Engineer

**This verification supersedes all previous verifications with the noted Verification/Report number(s) dated before this verification notice.**

**NOTE: This verification is part of the full test report(s) and should be read in conjunction with it.**

This Verification is for the exclusive use of Intertek's Client and is provided pursuant to the agreement between Intertek and its Client. Intertek's responsibility and liability are limited to the terms and conditions of the agreement. Intertek assumes no liability to any party, other than to the Client in accordance with the agreement, for any loss, expense or damage occasioned by the use of this Verification. Only the Client is authorized to copy or distribute this Verification. Any use of the Intertek name or one of its marks for the sale or advertisement of the tested material, product or service must first be approved in writing by Intertek. The observations and test results referenced from this Verification are relevant only to the sample tested. This Verification by itself does not imply that the material, product, or service is or has ever been under an Intertek certification program.

PCB Module Patch Panel  
 Feed 1 Patch Panel  
 Unloaded Patch Panel  
 Cable R  
 Surface Mount Box  
 Facej Bac  
 LAN ( T-Mod Adapter & Patch) LAN Tester  
 Tel: 110 Wiring Block  
 Acces:

Certificate

# Certificate



3933 US Route 11  
 Cortland, New York 13045 USA  
 Phone Number: (800) 345-3851  
 Fax Number: (607) 758-6637  
 Web: www.Intertek.com



## ETL Verified Certificate of Conformance Number: 100495486CRT-001b

On the basis of the tests undertaken, the sample(s) of the below product have been found to comply with the essential requirements of the referenced specifications at the time the tests were carried out.

**Applicant:**

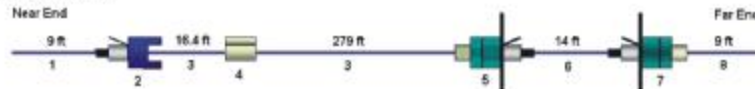
EPNew Electronics Co., Ltd  
 7F, No.5 Lane,163 Shin Yi Road  
 Ban-Ciao District  
 Taipei, Taiwan, R.O.C.  
 Contact: Mr. Yutai Liang

**Manufacturer:**

EPNew Electronics Co., Ltd  
 7F, No.5 Lane,163 Shin Yi Road  
 Ban-Ciao District  
 Taipei, Taiwan, R.O.C.  
 Contact: Mr. Yutai Liang

**Verification/Report Number:** 100457308CRT-001b

**Product Tested:**



Component ID	Manufacturer	Part Number	Description
1, 8	EPNew	6CBLP	Equipment Cord
2	EPNew	6KT	Wall Outlet
3	EPNew	6CBLC	Horizontal Cable
4	EPNew	6ICED	110 Block
5, 7	EPNew	6PL	Patch Panel
6	EPNew	6CBLP	Equipment Cord

**Standard(s)/Specification:** ANSI/TIA-568-C.2 Category 6 with the applicable electrical transmission characteristics

**Product(s) Literature May include:** ETL Verified -Connector Channel to ANSI/TIA-568-C.2 Category 6, along with channel illustration, and parts numbers.

Continuing compliance to this specification is monitored through production testing, quarterly inspections by Intertek at the production facility and random sample testing.

**Date Verified:** 8/31/2011

**Approved By:**

*Kathy Heath*  
 Kathy Heath, Program Coordinator

*Antoine Pelletier*  
 Antoine Pelletier, Engineer

**This verification supersedes all previous verifications with the noted Verification/Report number(s) dated before this verification notice.**

**NOTE: This verification is part of the full test report(s) and should be read in conjunction with it.**

This Verification is for the exclusive use of Intertek's Client and is provided pursuant to the agreement between Intertek and its Client. Intertek's responsibility and liability are limited to the terms and conditions of the agreement. Intertek assumes no liability to any party, other than to the Client in accordance with the agreement, for any loss, expense or damage occasioned by the use of this Verification. Only the Client is authorized to copy or distribute this Verification. Any use of the Intertek name or use of its marks for the sale or advertisement of the tested material, product or service must first be approved in writing by Intertek. The observations and test results referenced from this Verification are relevant only to the sample tested. This Verification by itself does not imply that the material, product, or service is or has ever been under an Intertek certification program.

PCB Module  
 Patch Panel  
 Feed Patch  
 Unloaded Patch Panel  
 Cable R  
 Surface Mount Box  
 Facej Bac  
 T-Mod Adapter & LAN Tester  
 LAN Patch  
 110 Wiring Block  
 Access



**Certificate**



**Attestation of Conformity**

**ISO/IEC, EN & TIA/EIA Unscreened  
Class D+ / Category 5e Four Connector Channel**

**EPNEW ELECTRONICS CO.,LTD.  
2F, No. 161, Shin Yi Rd., Panchaio City  
Taipei, Taiwan, R.O.C.**

*Attestation of Conformity No. 102190*

*This type of Class D+ / Category 5e unscreened four connector channel has been tested by 3P Third Party Testing and complies with the Class D:2000+ channel requirements of the proposed 2nd Editions of ISO/IEC 11801 and CENELEC EN 50173, Class D channel requirements of ISO/IEC 11801 ed. 1.2 and CENELEC EN 50173/A1, and Category 5e channel requirements of ANSI/TIA/EIA-568-B.1. The Attestation of Conformity is valid for the actually tested channel sample in T568B designation consisting of the following components:*

<i>Cables from EPNew:</i>	<i>Horizontal Cable, Flexible Cable, Qualification Status:</i>	<i>CBL-C From Patch Cord, CBL-2U Manufacturer Verified</i>
<i>Conn. Hardware from EPNew:</i>	<i>Keystone Jacks, Mount Box, EBX Patch Panel, Qualification Status:</i>	<i>EKTU and EKTH EPLU Manufacturer Verified</i>
<i>Patch Cords from EPNew:</i>	<i>5m, 1m and 4m Patch Cords, Qualification Status:</i>	<i>CBL-2U Manufacturer Verified</i>

Hoersholm, 15 August 2002

*Ole Lambertsen*  
Ole Lambertsen  
Test Responsible

Hoersholm, 15 August 2002

*Poul Villien*  
Poul Villien  
Coordinating Manager

*Independent Testing - For End User Confidence*

PCB Module Patch Panel  
Feed Patch  
Unloaded Patch Panel  
Cable R  
Surface Mount Box  
Facej Bac  
T-Mod Adapter & LAN Tester  
LAN Patch  
110 Wiring Block  
Tel: 110  
Acces

# Certificate

T H E K N O W L E D G E C E N T R E

## Attestation of Conformity

No. 2003-098 - Class E Channel, Category 6

**Company**  
EPNEW ELECTRONICS CO., LTD.  
2F, No. 161 Shin Yi Rd.  
Panchaio City  
Taipei Hsien  
Taiwan

**Channel identification (4 connector model)**

**85 metres of horizontal cable:**

- SUNF PU TECHNOLOGY CO., LTD., Cat. 6

**2x5, 4 and 1 metres flexible cable:**

- SUNF PU TECHNOLOGY CO., LTD., Cat. 6 UTP 250 MHz

**Plug**

- EPNEW ELECTRONICS CO., LTD., 6PGXX

**Wall Outlet:**

- EPNEW ELECTRONICS CO., LTD., 6KTXXXXX

**Patch Panel:**

- EPNEW ELECTRONICS CO., LTD., 6PLXXXXXX

**Generic cabling standards**

- ISO/IEC 11801 2. edition:2002
- ANSI/TIA/EIA-568-B.2-1
- EN 50173-1 2. edition:2002

**Technical report**

DELTA-E311599, DANAK-19J1014

Characteristic Class E channels - supplied by EPNEW ELECTRONICS CO., LTD. - have been tested under laboratory conditions by the EC (European Cabling) group of DELTA and comply with the requirements of the above specified standards. The Attestation of Conformity is only valid for the tested product.

Horsholm, 18 June 2003

Erik Bech  
Test Manager

Claude Videt  
Test Engineer

**DELTA**

Danish Electronics,  
Light & Acoustics

Ventjødtsvej 4  
2979 Horsholm  
Denmark


















Tel. (+45) 72 19 40 00  
Fax (+45) 72 19 40 01  
[www.delta.dk](http://www.delta.dk)

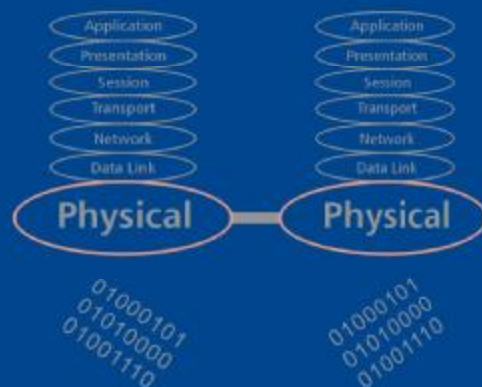
DELTA

CS-01-0102

## Packing Index

Item No.	pcs/cnt	N.W.	G.W.	MEAS	Item No.	pcs/cnt	N.W.	G.W.	MEAS
XPLA-240X	20	13.8	14.4	1.15'	PLKP-12XRM	10	6.6	7.4	1.65'
XPLA-240XFM	10	8.7	9.5	1.65'	PLKP-16XRM	10	6.5	7.3	1.65'
XPLA-241X	20	14.5	15.3	1.65'	PLKP-24XRM	10	6.2	7	1.65'
XPLA-241XFM	10	8.9	9.7	1.65'	PLKP-32XRM	10	10.4	11.4	2.4'
XPLH-120X	20	11.3	11.9	1.15'	PLKP-48XRM	10	10.2	11.2	2.4'
XPLH-160X	20	11.7	12.3	1.15'	PLKD-12X	40	19.9	20.5	1.15'
XPLH-240X	20	12.7	13.3	1.15'	PLKD-16X	40	18.6	19.2	1.15'
XPLH-320X	10	10.1	10.7	1.15'	PLKD-24X	40	17.3	17.9	1.15'
XPLH-480X	10	11.1	11.7	1.15'	PLKD-32X	20	16.3	16.9	1.15'
XPLH-121X	20	11.8	12.6	1.65'	PLKD-48X	20	14.9	15.5	1.15'
XPLH-161X	20	12.2	13	1.65'	PLKD-12XRM	10	7.8	8.6	1.65'
XPLH-241X	20	13.3	14.1	1.65'	PLKD-16XRM	10	7.5	8.3	1.65'
XPLH-321X	10	10.6	11.4	1.65'	PLKD-24XRM	10	7.2	8	1.65'
XPLH-481X	10	11.9	12.7	1.65'	PLKD-32XRM	10	12.9	13.9	2.4'
XPLEN-080X	25	8.1	8.7	1.7'	PLKD-48XRM	10	12.1	13.1	2.4'
XPLEN-120X	25	8.8	9.6	1.7'	PLK-12XD	40	14.2	14.8	1.15'
XPLEN-081X	25	8.4	9.2	1.7'	PLK-16XD	40	13.9	14.5	1.15'
XPLEN-121X	25	9	9.8	1.7'	PLK-24XD	40	13.4	14	1.15'
XPP89-120X	25	7.9	8.7	1.7'	PLK-32XD	20	12.2	12.8	1.15'
XPP89-121X	25	8.1	8.9	1.7'	PLK-48XD	20	11.2	11.8	1.15'
XPA89-080X	25	8.3	9.1	1.7'	PLK-12XH	40	14.6	15.2	1.15'
XPA89-120X	25	9.2	10	1.7'	PLK-16XH	40	14.2	14.8	1.15'
XPA89-081X	25	8.4	9.2	1.7'	PLK-24XH	40	14	14.6	1.15'
XPA89-121X	25	9.4	10.2	1.7'	PLK-32XH	20	12.5	13.1	1.15'
XPM89-080X	25	9.6	10.4	1.7'	PLK-48XH	20	12.2	12.8	1.15'
XPM89-120X	25	10.2	11	1.7'	XKTHN-U0X	1000	8.3	8.9	1.15'
XPM89-081X	25	9.8	10.6	1.7'	XKTHN-U1X	1000	9	9.6	1.15'
XPM89-121X	25	10.4	11.2	1.7'	XKTVN-U0X	1000	7.6	8.2	1.15'
XPLDN-F16X	10	13.6	14.4	1.65'	XKTVN-U1X	1000	8.2	8.8	1.15'
XPLDN-F24X	10	14.6	15.4	1.65'	XIC-UJJHNX	1000	6.1	6.7	1.15'
XPLIN-F08X	20	14.4	15.2	1.65'	XIC-FJJHNX	1000	11.9	12.5	1.15'
XPLIN-F12X	20	15	15.8	1.65'	XIC-UKTHNX	1000	5.9	6.5	1.15'
XPLTN-F08X	20	12.6	13.4	1.65'	XIC-FKTHNX	1000	10.8	11.4	1.15'
XPLTN-F12X	20	13.6	14.4	1.65'	XIC-UEDX	500	11.4	12.2	1.7'
ISDN-25X846	10	11.5	12.3	1.65'	XIC-FEDX	500	11.9	12.7	1.7'
ISDN-50X846	10	12.5	13.3	1.65'	XIC-UNJX	500	9.2	10	1.7'
PLMN-01043	20	11.2	12	1.65'	XIC-FNJX	500	10.7	11.5	1.7'
PLMN-21043	10	8.6	9.4	1.65'	BK-1X	250	4.2	4.8	1.15'
PLMN-060	20	8.7	9.5	1.65'	BK-2X	200	5	5.6	1.15'
PLMN-260	10	8.6	9.6	2.4'	BK-4X	100	8.3	9.1	1.7'
PLMN-070N	40	14.4	15	1.15'	BK-6X	50	6.2	6.8	1.15'
PLMN-270N	20	16	16.6	1.15'	BK-8X	50	9.5	10.3	1.7'
PLMN-H0801U	40	14.8	15.4	1.15'	RBK-1X	250	6.7	7.3	1.15'
PLKP10-12X	25	4.8	5.6	1.7'	RBK-2X	200	7.7	8.3	1.15'
PLKP-12X	40	14.4	15	1.15'	XTMD-UCJXX	250	8.8	9.6	1.7'
PLKP-16X	40	14.2	14.8	1.15'	XTMD-FCJXX	250	10.8	11.6	1.7'
PLKP-24X	40	13.7	14.3	1.15'	LT-100B	25	7.1	7.7	1.15'
PLKP-32X	20	11.2	11.8	1.15'	LT-100L	25	7.7	8.3	1.15'
PLKP-48X	20	10.7	11.3	1.15'	LT-200	50	10.9	11.5	1.15'

-  PCB Module Patch Panel
-  Feed Through Patch Panel
-  89 Series Mini Patch Panel
-  Unloaded Patch Panel
-  Cable Manager & Rack
-  Keystone Jack & Inline Coupler
-  Surface Mount Box
-  Faceplate & Back Box
-  Wall Outlet
-  T-Mod Adapter & LAN Tester
-  LAN Cable & Patch Cord
-  Plug , Boot & Cable Tie
-  110 Wiring Block
-  Telecom Accessories
-  Tools
-  Certificate
-  Packing Reference



## EPNEW Electronics Co., Ltd.

7F , No.5 , Lane 163 , Shing-Yi Rd., Ban-Giao Dist., New Taipei City , Taiwan

Tel : 886 2 2952 6198 ( Rep. )

Fax : 886 2 2951 1479

eMail : epnsales@epcorp.com.tw

Web : www.epcorp.com.tw

ISSUE : 01